

Zyrion Traverse™ 5.0 Release Notes



May, 2009
PN TRV-RN-50

These Release Notes provide additional information for the Traverse 5.0 software release.

Table of Contents

- [Kit Contents](#) on page 1
- [New in this Release](#) on page 1
- [Issues Fixed in this Release](#) on page 3
- [Known Issues](#) on page 4
- [Available Documentation](#) on page 4
- [Contacting Zyrion](#) on page 5

Kit Contents

The Zyrion Traverse package includes:

- traverse-5.0.xxx-linux.tar.gz
- traverse-5.0.xxx-solaris.tar.gz
- traverse-5.0.xxx-windows.exe
- wmitools-5.0.xxx-windows.exe
- Documentation
 - Traverse-50-UserGuide.pdf
 - Traverse-50-DevGuide.pdf
 - Traverse-50-ReleaseNotes.pdf

NOTE: The x's in the filenames above represent the minor revision number.

All the files listed above are directly downloadable from the Zyrion support web site at <http://www.zyrion.com/support>.

For hardware and software requirements and installation and update instructions, see the *Traverse 5.0 User Guide*.

New in this Release

Traverse 5.0 includes the following new features.

RealView Dashboard

The RealView dashboard feature lets you create custom dashboards to view the performance of services and infrastructure. You can create multiple dashboards, each containing up to twenty components that can display and chart any metrics selected, and update in real time.



Figure 1-1. RealView Dashboard

Integration with NetFlow & Other Packet Analysis Products

Traverse integrates with network flow and packet level data collection tools to provide a seamless drilldown from system and device level monitoring to troubleshooting and analysis using flow and packet data. This data provides details about the network traffic between hosts, enabling quick identification of impacted services, trouble areas, and problem sources.



Figure 1-2. Network Flow Analysis

New Web-based Panorama Topology Display

The previous version of Panorama, which was implemented as a client-side application that ran on the user's workstation, has been completely rewritten for Traverse 5.0 to run within the Web browser.

The Panorama feature offers an interactive graphical representation of the devices in your network that are being monitored, including the status of the devices and the dependency relationships between them. Panorama offers three different topology layouts, flexible display filters, pan and zoom functionality, the ability to configure and save custom views, and the ability to add or remove device dependencies.

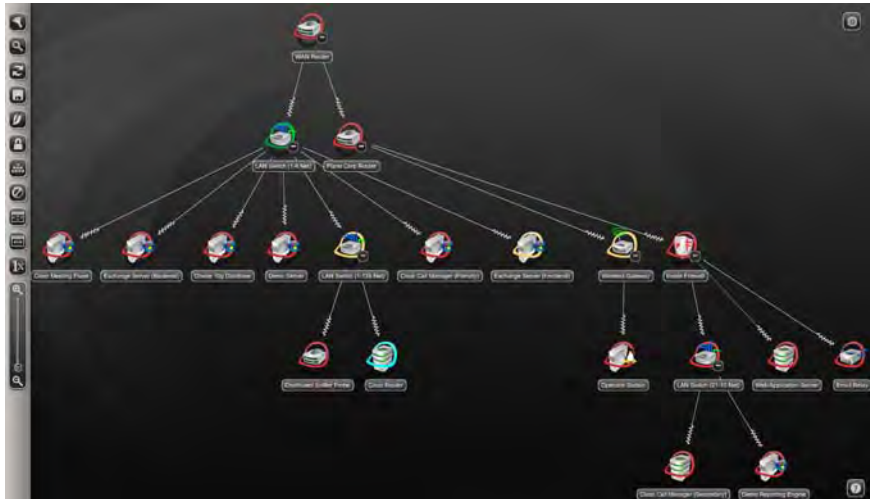


Figure 1-3. Panorama Topology Display

Support For the Following Devices:

- Dell Equallogic SAN Switch
- Cisco Application Content Engine (ACE)
- Riverbed Steelhead WAN Optimizer

Minor Enhancements:

- Support for "units" parameter in all test.create BVE API commands
- Support for JMX test management in BVE API
- Support for Oracle test management in BVE API
- Support for deviceType={windows, linux, vpn} in BVE API
- Support for scheduled discovery of JMX tests
- Ability to set range for custom reports by time in addition to date.
- Custom fields now loaded and displayed from plug-in monitor definition in order.

Issues Fixed in this Release

The following are some of the key issues that are fixed in this release. This is not a complete list of all the bugs and issues. Please see the CHANGELIST on the Traverse download site for a more complete list.

- A remote DGE connected by a high latency link could have long initialization times.
- Cached information was shown for container membership when using IE 7.
- Windows components failed to start when installed on a secondary drive.
- Executing the logout command on one EDF session invalidated other active sessions.
- Custom threshold violation report sorted incorrectly.
- Events from message.insert command were not recorded in the DGE database.
- HTML page source showed the value of the password field in clear text.
- A server reboot could leave the Apache monitor in an unusable state.
- An incomplete list of SNMP tests was discovered when using SNMPv3.
- A stale (previous) raw result was used when a suspended test was resumed.

-
- Moving a device across departments reset test thresholds.
 - Graph content on a pop-up/detached graph did not periodically refresh.
 - Could not create a URL transaction against a password-protected website.
 - Could not update a container with a large number of existing members.
 - Could not clear/acknowledge multiple events from Event Manager.
 - Could not schedule an ad-hoc report for email delivery.
 - Could not discover new JMX tests via the Web Application.
 - Could not run custom performance report with all test types.
 - Could not drill down into affected container from Event Manager.
 - Could not query a device when using SNMPv3 without encryption.

Known Issues

The following are some issues known to exist in this release.

- Slow performance when acknowledging multiple events in Event Manager.
- Cannot use an exported device while creating a device container.
- Traverse Service Manager does not run on Windows 2008 Server.
- Using Panorama with a large number of devices displayed results in high CPU usage on the client workstation.
- Test category exclusion from user-class is only honored when adding tests manually.
- Placing a large number of nodes side by side in Panorama results in a distorted image on the overview map.

Available Documentation

Documentation for Zyrion Traverse is available in Adobe PDF format or online help system in HTML format.

Acrobat Reader is needed to open documents in PDF format. A free copy of Acrobat Reader is available from the Adobe website.

The documentation set for this release consists of the following documents:

- *Traverse 5.0 Release Notes (this document)*
- *Traverse 5.0 User Guide*
- *Traverse 5.0 Developer Guide & API Reference*

Contacting Zyrion

Contacting Zyrion, Inc.

Customer Support

You can reach Zyrion technical support online:

<http://www.zyrion.com/support>

Telephone

In the US: **877-7-ZYRION (877-799-7644)**

Outside the US: **+1 408-524-7424**

E-mail

support@zyrion.com

User Forum

To join a customer-driven user group connecting the worldwide community of Zyrion users, visit our online forum:

<http://forums.zyrion.com/>