



TRAVERSE CONFIGURATION MANAGEMENT

UNIFIED IT MANAGEMENT SOLUTION

TRAVERSE OVERVIEW

Zyrion's Traverse solution provides IT and Cloud Infrastructure Monitoring functionality, ITIL Business Service Management (BSM) capability, and flexible Configuration Management, all within one pre-integrated system. This functionality is supported in an easy-to-use and rapidly deployable footprint.

Traverse supports viewing service impacts by correlating data from different parts of the IT infrastructure, drilling-down to identify the underlying technical components, determining the sources of performance degradation, and then where applicable, rapidly making the configuration changes to remediate the problem. Traverse provides a unified environment, where configuration management is directly tied to network performance and business service monitoring.

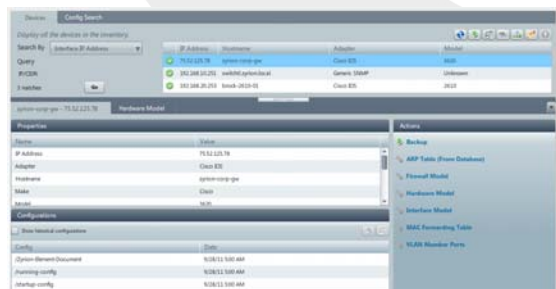
CONFIGURATION MANAGEMENT & ITIL

The Traverse Configuration Management module enables backup, restore and tracking of changes in network device configurations across the enterprise network. Traverse can manage configurations of thousands of network devices including routers, switches, firewalls, load balancers and security appliances.

Configuration Management is an important component of the ITIL framework. Proper tracking and notification of configuration changes in the network prevents unexpected outages, as well as helps to correlate undesired changes in network behavior with recent configuration changes.

Traditional Network Management solutions have disparate monitoring and configuration tracking capabilities with no correlation between them. Unexpected configuration changes can result in major network outages, which can then take an extremely long time to track down. This drives up costs for the enterprise, and effects overall business performance.

Traverse addresses these challenges by providing business service monitoring, IT performance management, and flexible configuration management in one unified and integrated system. Not only can IT administrators correlate network outages to configuration changes instantly, but also see the impact on a Business Service through use of Traverse's BSM module. This reduces the 'Mean Time to Recover' from outages and directly improves the bottom line.



DISCOVER & BACKUP CONFIGURATIONS

Traverse automatically discovers devices and backs up the configuration for all network devices.

STORE COMPREHENSIVE DETAIL ON DEVICES

Traverse stores full configuration information for devices, including the Hardware Model (make, model, serial #, part #, etc.), Interface Model (type of interface, speed, MTU, MAC, etc.), Firewall Model and more.

CONFIGURATION HISTORY & COMPARISON

Traverse maintains the full configuration history of devices. Users can compare device configurations to ensure compliance and standardization.

CHANGES, BACK-UP AND RESTORATION

Users can easily execute configuration changes through use of templates, and an intuitive and simple interface. Back-ups can be executed on-demand as needed, or on a defined schedule.

SEARCH CONFIGURATIONS

Users can perform a global search for specific text in any configuration files or find any device with matching text. Additionally, Traverse provides the ability to search ARP and MAC tables for locations of other networked assets.

INTEGRATION AND EXTENSIBILITY

Configuration management operations can be directly initiated from within the unified Traverse user interface. The framework to retrieve device configurations is extensible and support for new devices can easily be added.

Type	Description	Make	Model	Part #	Serial #	Hardware Ver	Slot #
Card	Ethernet Port adaste	Cisco	Unknown	800-0206-03	27212826	1.1	1
Card	Fast-ethernet CT1 IC	Cisco	Unknown	800-0903-02	11422870	1.0	
CPU	84700 CPU at 80Mhz						
Chassis	Cisco Internetwork C	Cisco	3620		13833199		

SUPPORT FOR WIDE VARIETY OF DEVICE TYPES

Summarized below is a partial list of supported devices.

- 3Com SuperStack 3 Switch 4400
- 3Com SuperStack II and CoreBuilder Switches
- 3Com SuperStack II Switch 3300
- Adtran NetVanta devices 1.0
- Alcatel's OmniSwitch OS
- Alteon AD3 Load Balancers
- APC Smart-UPS
- Arrowpoint Load Balancers
- Aruba Switches Running ArubaOS
- Check Point SecurePlatform
- Cisco 3000 Series VPN Concentrators
- Cisco Aironet with VxWorks
- Cisco Application and Content Networking System devices
- Cisco Catalyst Switches running CatOS
- Cisco Content Services Switches
- Cisco CS500 Terminal Servers
- Cisco Linksys RV042 VPN Routers
- Cisco LocalDirector Load Balancers
- Cisco Security Appliances (PIX, ASA, FWSM)
- Cisco Wide-Area Application Services devices
- Dell PowerConnect Switches
- Extreme Switches running Extremeware
- Enterasys Vertical Horizon Switches
- Enterasys X-Pedition Switch Routers
- F5 3DNS Wide-Area Load Balancers
- F5 BIG-IP Load Balancers
- Foundry FastIron
- Foundry ServerIron
- Generic SNMP Devices
- HP ProCurve M Series Switches
- HP ProCurve switches
- Juniper Routers and Switches running JUNOS
- Juniper ScreenOS Firewalls (Netscreen)
- Marconi ATM Switches
- Nokia Checkpoint Firewalls
- Nortel Accelar
- Nortel Tiara
- Nortel BayRS Routers
- Nortel BayStack Family Switches (BayStack, BPS)
- Nortel Contivity VPN Switches
- Nortel Passport 1600 Series Switches
- Nortel Passport Switches
- Router with IOS (OS Versions 10.1 and above)
- Vyatta Open Flexible Routers (OFR)

HOW TRAVERSE DIFFERS FROM VENDOR-SPECIFIC CONFIG TOOLS LIKE CISCOWORKS

Traverse provides a central point to control configuration changes and monitor network health. A large number of performance problems and outages are a result of configuration changes, and so being able to immediately correlate a configuration change with an outage or poor performance means much faster problem resolution.

Traverse support a wide range of devices, and is not limited to Cisco infrastructure. Since Traverse has a built in discovery and inventory interface, Traverse is also able to go deeper into the configuration and status of each device. Additionally, Traverse can be easily extended through use of the plug-in API to capture all kinds of data to provide holistic change management support. Traverse's distributed architecture is also highly scalable.

Business Service Assurance